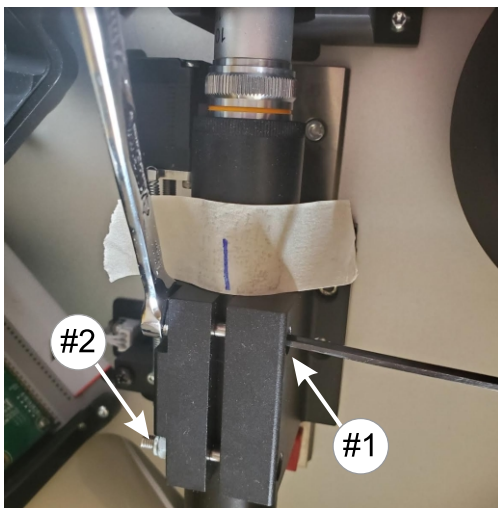


Unless the microscope tube is completely loose in its bracket, put a piece of tape with a centerline mark at the place where the tube meets the bracket. This will serve as a reference during adjustment.

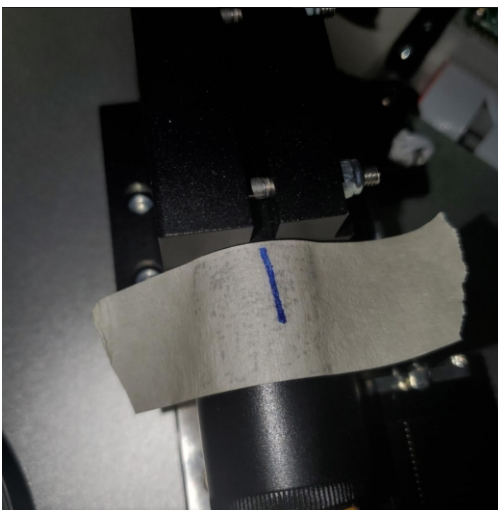
Note that the gap between the tube and the *core cover is approximately 1" (2.5cm).



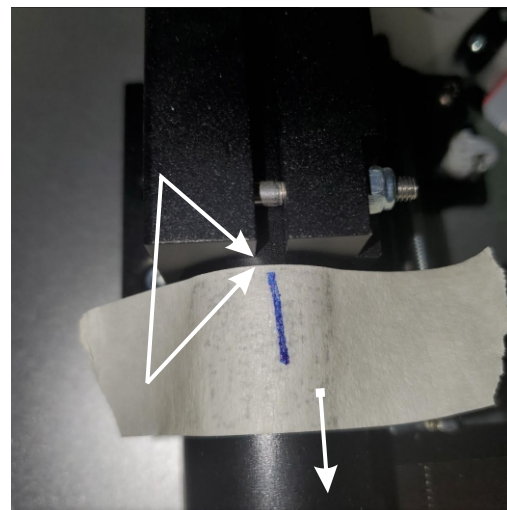
Use a 3mm allen hex wrench and a 7mm or small adjustable wrench and loosen the bolts enough that the microscope tube begins to slide in the bracket around it.

Note that there are two bolts and two nuts.

After moving the tube to the position suggested by our technicians, tighten the bolts so that they are snug around the microscope tube.



Here's the default position of the tube relative to the bracket around it.



In this example, the tube has moved more closely to the core (bottom of the sensor). Pollen Sense support technicians will instruct you as to the direction the tube should move.